

從核心到雲端 從碳中和到碳負排

Lenovo與AMD共築AI基礎設施

黃國柱 Andrew Huang
全球機架式伺服器 產品管理總經理
WW Rack Servers Product Management Director



“ AGENDA

- Lenovo & ISG 簡介
- 從核心到雲端 AMD & AI 產品介紹
- 從碳中和到碳負排 水冷方案介紹
- Q&A

智能為一切可能

Lenovo 解決方案讓世界更美好

#196

2025 Fortune Global 500

Lenovo

Lenovo Jumps 52 Spots on 'Fortune Global 500' List Following Strong FY2024/25 Performance

2024年全球前五大品牌個人電腦廠商出貨量、市佔率及年成長率

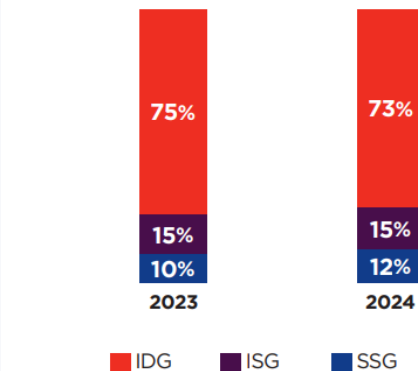
(出貨量單位為百萬台)

品牌廠商	2024 出貨量	2024 市佔率	2023出貨量	2023市佔率	2024/2023 年成長率
1. Lenovo	61.8	23.5%	59.1	22.7%	4.7%
2. HP Inc.	53.0	20.2%	52.9	20.3%	0.1%
3. Dell Technologies	39.1	14.9%	40.0	15.4%	-2.2%
4. Apple	22.9	8.7%	21.9	8.4%	4.5%
5. Asus	17.9	6.8%	16.8	6.5%	6.4%
其他	68.0	25.9%	69.5	26.7%	-2.1%
總計	262.7	100.0%	260.2	100.0%	1.0%

來源: IDC Quarterly Personal Computing Device Tracker, January 9, 2025

Revenue Analysis by Business Group*

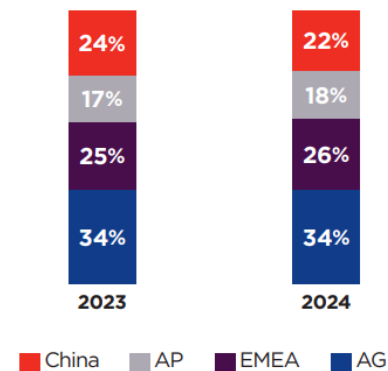
for the year ended March 31



<https://ir.lenovo.com/en/investors/reports.php>

Revenue Analysis by Geography

for the year ended March 31



AMD Runs Best on Lenovo – ThinkSystem Portfolio

Powered by 4th and 5th Generation AMD EPYC™ processors

Edge as a Location

GPU-Rich AI System

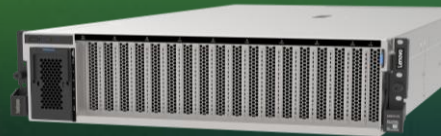
High Performance Computing



SE455 V3



ST45 V3



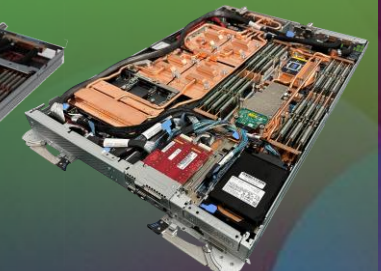
SR675 V3



SR685a V3



SD665 V3



SD665-N V3

General Purpose 1S and 2S

Hyper-Converged

High Density



SR655 V3



SR665 V3



SR635 V3



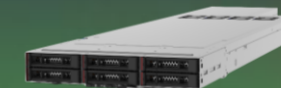
SR645 V3



ThinkAgile HX665 V3
ThinkAgile HX665 V3 Storage
ThinkAgile HX645 V3
ThinkAgile VX665 V3
ThinkAgile VX645 V3



SD535 V3



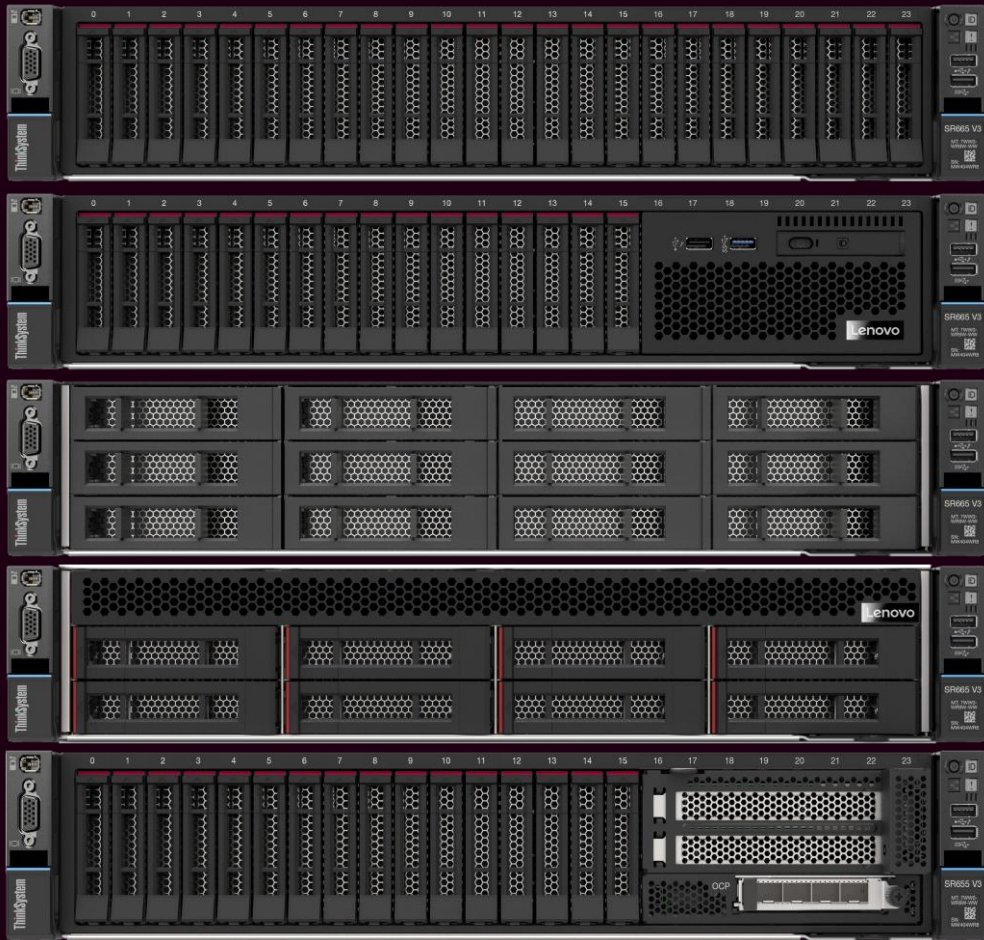
AMD ThinkSystem/ThinkAgile Performance Benchmarks

281 Current World Records on ThinkSystem & ThinkAgile

SAP	Transaction Processing & Decision Support	Virtualization	Compute	Energy Efficiency	Data Analytics	JAVA Application	High Performance Computing	Artificial Intelligence Computing
1	8	2	24	15	0	24	140	67
SD2T BWoH Q2C	TPC-E TPC-H	SPECvirt SPECvirt Datacenter VMmark	SPEC CPU	SPECpower SAP Q2C-Power	STAC-M3	SPECjbb	SPEC MPI SPEC OMP SPEC ACCEL SPEC hpc	* MLPerf TPCx-AI

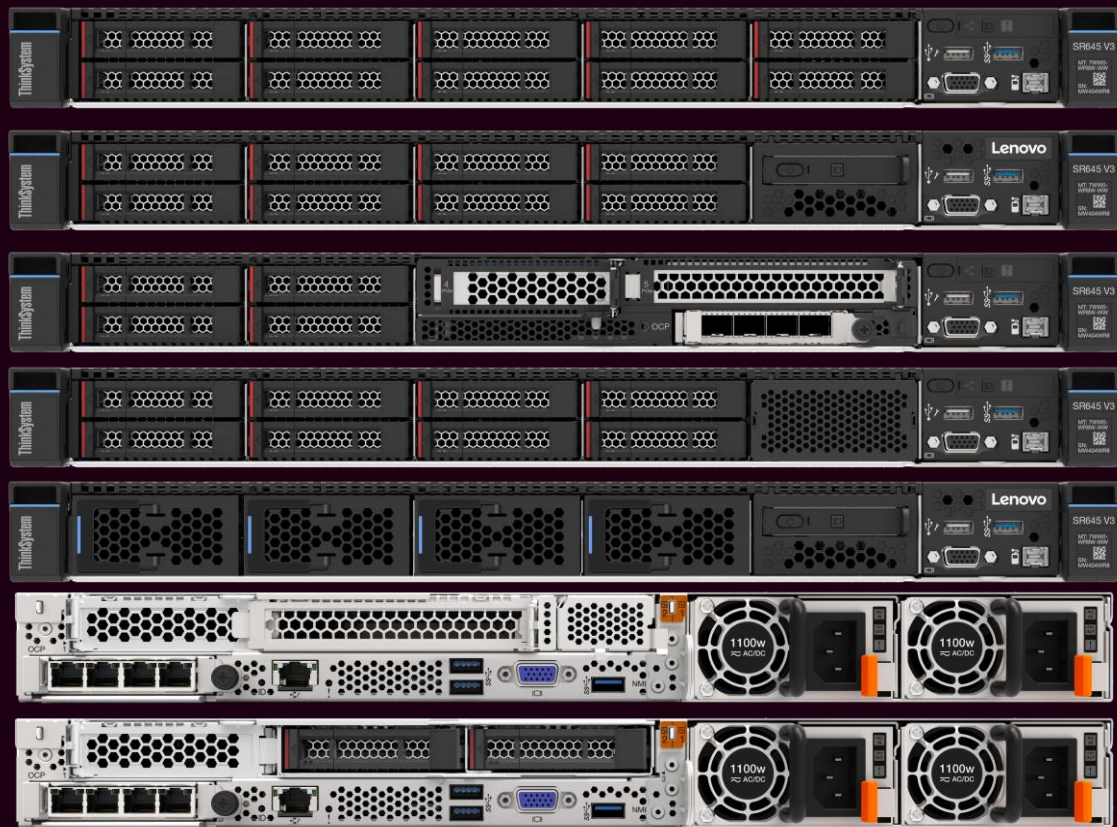
* Note: Most AI benchmarks depend on accelerator (GPU) performance, not CPU performance. The AI WRs shown by CPU indicate the system type/generation used.

ThinkSystem SR665 V3



Product Name(s)	ThinkSystem SR665 V3
Form Factor	2U rack server
Processors	Up to 2x 4th or 5th Generation AMD EPYC™ Processors
Memory	Up to 24x TruDDR5 memory slots Maximum 6TB using 256GB 3DS RDIMMs; up to 1DPC at 6400MHz
Drive Bays	Up to 20x 3.5" or 40x 2.5" drives
Expansion Slots	Up to 12x PCIe slots (9x PCIe 5.0) 1x OCP 3.0 adapter slot
GPU	Up to 8x single-width LP GPUs or 3x double-width GPUs
Network Interface	OCP 3.0 mezz adapter, PCIe adapters
Power	Dual redundant PSUs Titanium/Platinum to meet ErP Lot 9 standard
Ports	Front: 1x USB 3.0 G1, 1x USB 2.0, 1x VGA (optional) Rear: 3x USB 3.1 G1, 1x Ethernet Management port, 1x Serial COM Port(Optional)+1x VGA Port
System Management	Lenovo XClarity Controller
OS Support	Microsoft Windows Server, SUSE Linux Enterprise Server, Red Hat Enterprise Linux, VMware ESXi
Limited Warranty	1- and 3-year customer replaceable unit and onsite services, next business day 9x5; optional service upgrades

ThinkSystem SR645 V3



Product Name(s)	ThinkSystem SR645 V3
Form Factor	1U rack server
Processors	Up to 2x 4th or 5th Generation AMD EPYC™ Processors
Memory	Up to 24x TruDDR5 memory slots Maximum 6TB with support for 3DS RDIMMs; up to 1DPC at 6400MHz
Drive Bays	Up to 4x 3.5", 12x 2.5" drives, or 16x EDSFF E1.S drives
Expansion Slots	Up to 3x PCIe 4.0, 2x PCIe 5.0 slots 1x OCP 3.0 adapter slot
GPU	Up to 4x single-width GPUs
Network Interface	OCP 3.0 mezz adapter, PCIe adapters
Power	Dual Redundant AC & DC Supplies with Titanium/Platinum for ErP Lot9 Compliance
Ports	Front: 1x USB 3.1 G1, 1x USB 2.0 with XCC connection for mobile device, 1x VGA (optional), Optional external Diagnostic Port Rear: 3x USB 3.1 G1, 1x VGA Port, 1x Serial port (optional), System ID LED, Error LED, NMI Button
Systems Management	Lenovo XClarity Controller
OS Support	Microsoft Windows Server, SUSE Linux Enterprise Server, Red Hat Enterprise Linux, VMware ESXi
Limited Warranty	1- and 3-year customer replaceable unit and onsite services, next business day 9x5; optional service upgrades

ThinkSystem SR675 V3

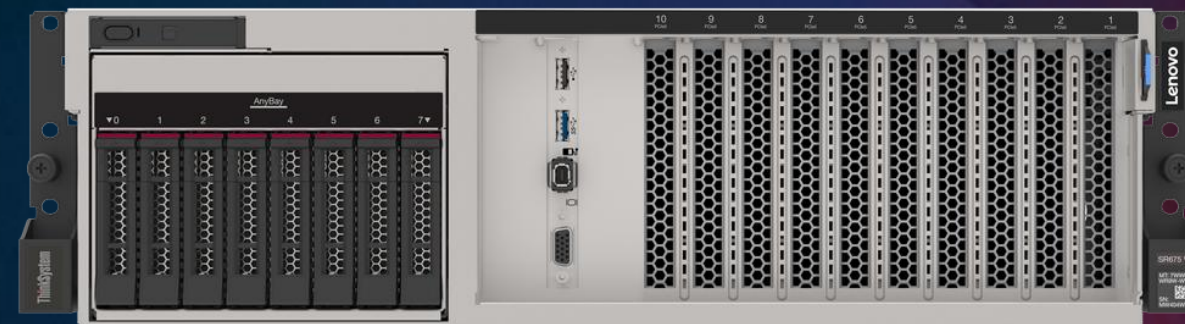
Scalable, GPU-rich Artificial Intelligence System

Targeted Workloads

- AI Training: Machine Learning & Deep Learning
- Visualization applications
- Real Time Natural Language Processing (NLP)
- Digital Twins & other large scale Omniverse™ apps

Key Capabilities

- 2S 3U rack mount system with up to 8 full size GPUs
- Two 4th Gen or 5th Gen AMD EPYC™ processors
- Supports NVIDIA Hopper, Lovelace and Ampere datacenter portfolio and AMD Instinct™ MI Series GPUs
- GPU Direct – NVMe drives connect directly to GPUs for increased storage performance
- One model with four socketed H100s cooled with Neptune™ Liquid to Air (L2A) heat exchanger delivers the benefits of Neptune in an air-cooled system



5 PFLOPS

AI performance per rack

700+

HPC apps supported with
NVIDIA® CUDA®

2-8X

Higher storage bandwidth
with GPU Direct

728

GPU instances per rack
with NVIDIA Multi-Instance
GPU (MIG)

**When comparing V3 vs V2

ThinkSystem SR685a V3

A 2-socket, 8U system built for AI performance with AMD processors and GPUs



Ideal for both AI and HPC

- Industries: Financial services, healthcare, energy, climate science, and transportation
- AI Workloads: Model development, training and retraining, Machine Learning, Deep Learning, LLMs
- HPC workloads: Modeling and simulation, rendering, financial tech, scientific research

Performance

- Industry-leading 4th and 5th Gen AMD EPYC™ processors
- Maximum GPU Performance w/ AMD Instinct™ MI300x
- Fastest Interconnect for an ultra-fast transfer rate with AMD Infinity Fabric™ at 896 GB/sec
- 3 TB Storage with 24x DDR5

Flexible

- Choice of AMD MI300X, NVIDIA H100 / H200/B100 GPUs
- Drop-in upgrade to AMD next-gen processor
- Easy to manage and simplified deployment with Lenovo XClarity System Management Software
- Fits into industry-standard 19-inch racks

Advanced Thermals

- Designed with additional thermal headroom to accommodate future, high powered, GPUs
- Advanced Air-Cooled Design

What is **Lenovo TruScale Infrastructure as a Service**

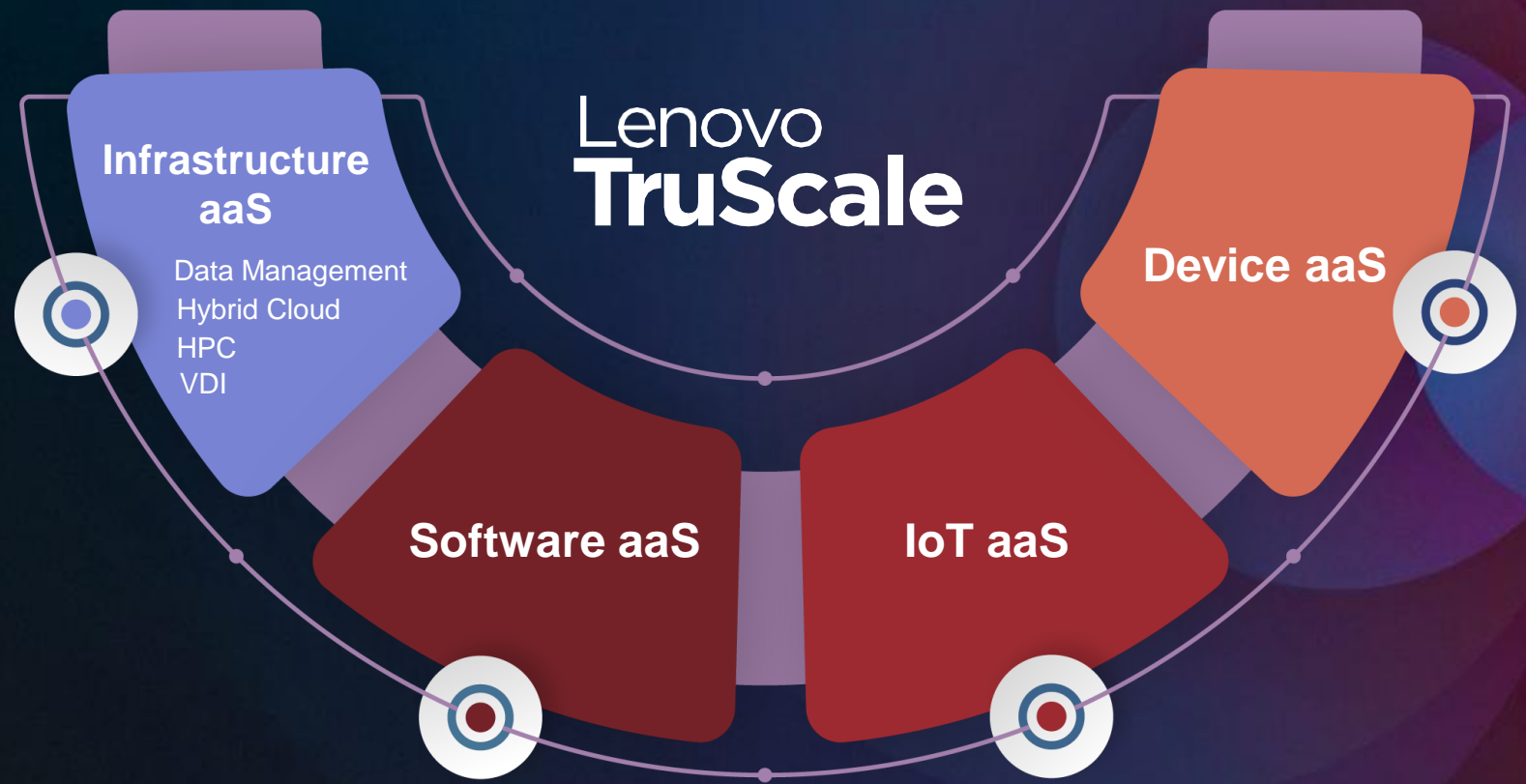
Lenovo TruScale Infrastructure as a Service (IaaS) delivers the power and strategic advantage of the latest datacenter hardware through a pay-as-you-go business model with solutions for data management, hybrid cloud, HPC, VDI, and AI.

Industry's broadest portfolio
from pocket to cloud delivered as a service.

Single unified framework
to easily manage day-to-day IT operations
with full visibility and accountability.

Global scale capability
to rapidly and securely provision global
teams – anytime, anywhere.

Flexible consumption models
fixed or metered pay-as-you-go model that
frees-up capital with minimal up-front costs.



Smarter
technology
for all

Lenovo

thanks.